



PX400 | PX500: Advanced Grinder/Polisher Series

PX400/PX500: Advanced Grinding and Polishing

LECO's PX series emphasizes ease-of-use while delivering exceptionally flat specimens that are ideal for microhardness or microstructural work at the next sample step. Designed with the latest technology, the PX400/PX500 provide an efficient, safe, reliable, and clean grinding/polishing solution through a number of innovative, user-friendly features.



PX400



PX500



Product Highlights



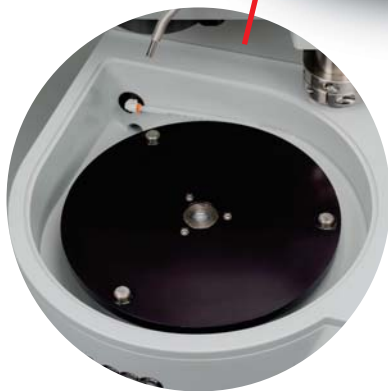
Up to five programmable metered fluid dispensers deliver consistent suspensions and extenders to meet every polishing objective.



A brilliant multi-touch display with responsive graphics simplifies operation.



The emergency stop button is located just under the touch-screen to quickly halt a grinding operation.



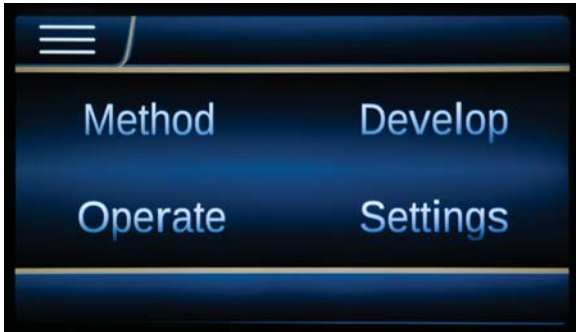
A spiral bowl design with automatic bowl-wash system prevents drain clogs.



Slow rotation and indexing for easy loading and removal of mounts all help to streamline sample prep.

Intuitive, Easy-to-use Software

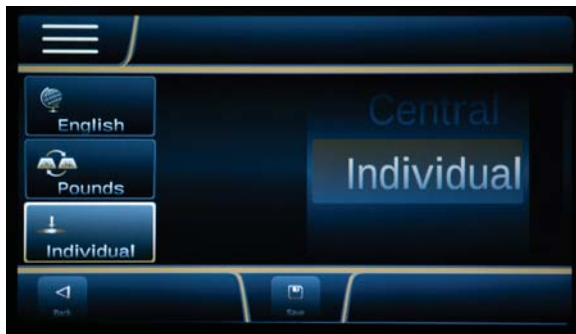
The PX400 and PX500 feature touch-screen software with a variety of useful tools to simplify your grinding/polishing process.



Select settings from Main Menu



Select configuration from list scroll through



Choose individual specimen holder option



Method Option: Choose application



Clone method and modify as necessary



Custom method (green dot) is added to "library" of methods



New method will show up on method list only if desired



When a method is run, the operator is guided through it step-by-step

Instrument Features

The PX400 and PX500 reflect our commitment to quality and reliability through implementing the latest technology. A number of improvements help users streamline their grinding/polishing process and prepare samples for the next step of analysis.

The Latest Technology

- Energy-efficient AC drives and induction motors provide smooth acceleration for any sample.
- Pressure is gently ramped using precision force controlled electronics, ensuring delicate samples stay safe.
- More than twenty built-in proven methods, expandable with user-created methods.

Safety

- Bright LEDs ensure the work area is safely lit, and turn off automatically when not in use.
- A custom-designed isolation transformer prevents GFCI nuisance trips.

Reliability

- Designed, engineered, and manufactured exclusively by LECO at our Global Headquarters in the United States.
- Rugged structural and electronic components are made to withstand the toughest environments.

Cleanliness

- Automatic water spigot can be quickly detached to further rinse away debris.
- A “spin dry” feature removes excess water from the grinding surface keeping drips to a minimum.



Models



PX400

PX400A1 (115 V) /PX400A2 (230 V)

Automatic model: offers both a fixed and individual sample holder

PX400S1 (115 V) /PX400S2 (230 V)

Simple model: fixed sample holder

PX500

PX500A2 (230 V)

Fixed and individual sample holder with 5 dispensers standard



Other Metallographic Solutions



Sectioning Machines

Versatile sectioning machines offer both linear and radial feed configurations in efficient benchtop and floor models.

Consumables

Even the best metallographic equipment cannot compensate for sub-standard consumable products. LECO offers you high quality consumables for all of your metallurgical applications.

- Sectioning Blades
- Diamond Wafering Blades
- Cutting Oils/Rust Inhibitors
- Mounting Materials and Supplies
- Abrasive Belts
- Abrasive Discs
- CAMEO® Magnetic Disc System
- Abrasive Rolls and Strips
- Diamond Grinding Discs
- Polishing Cloths
- Polishing Powders
- Liquid Polishing Suspensions
- Diamond Sprays/Suspensions/Compounds
- Specimen Caps
- Nano Diamond Star Polishing Film
- Fastick™ Polishing Cloth Disc System



www.lecodirect.com

High-quality LECO metallographic consumables are now available for purchase online! Call 1-800-292-6141 to get a username and password, then visit www.lecodirect.com and enter your log-in information. Purchases can be made with a credit card or valid Purchase Order.

LECO Corporation
3000 Lakeview Avenue | St. Joseph, MI 49085 | 800-292-6141 | Phone: 269-985-5496
info@leco.com | www.leco.com | ISO-9001:2008 • HQ-Q-994

LECO[®]
Delivering the Right Results